

Welcome!

We are so glad you are here!

We will get started shortly.
In the meantime, we invite you to
intentionally enter this space.



Silence your cell
phone



Stretch



Close the door



Take a few deep
breaths



Close browser
windows



Emotionally release
your to-do list



Check your audio
and video



Take a bio break

Infant Health Equity Supplemental Funding Webinar

WEDNESDAY, JANUARY 19, 2022
3:00PM — 5:00PM ET

THE HEALTHY START TA & SUPPORT CENTER IS OPERATED BY THE NATIONAL INSTITUTE FOR CHILDREN'S HEALTH QUALITY (NICHQ). THIS PROJECT IS SUPPORTED BY THE HEALTH RESOURCES AND SERVICES ADMINISTRATION (HRSA) OF THE U.S. DEPARTMENT OF HEALTH AND HUMAN SERVICES (HHS) UNDER GRANT NUMBER 1 UF5MC327500100 TITLED SUPPORTING HEALTHY START PERFORMANCE PROJECT.

NICHQ
National Institute for
Children's Health Quality

HEALTHY
start
TA & SUPPORT CENTER



Agenda

Housekeeping

Tess Pritchard

HEALTHY START TA & SUPPORT
CENTER (TASC)

Welcome

Melodye Watson

DIVISION OF HEALTHY START &
PERINATAL SERVICES (DHSPS)

Introductions

Kenn Harris

TASC

Round Robin Updates

All

Stepping In

Kenn Harris

**Challenges: Breakout
Groups & Debrief**

All

Questions

All

Next Steps

Nikki Maffei

TASC





THIS SESSION IS BEING RECORDED.



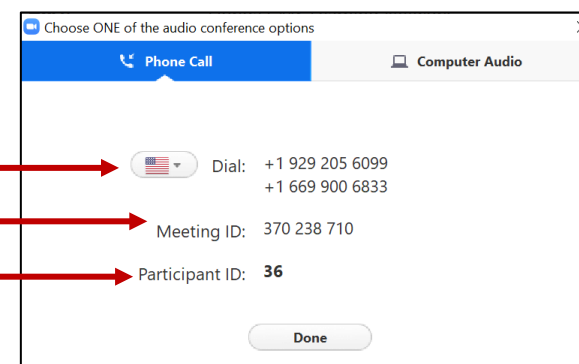
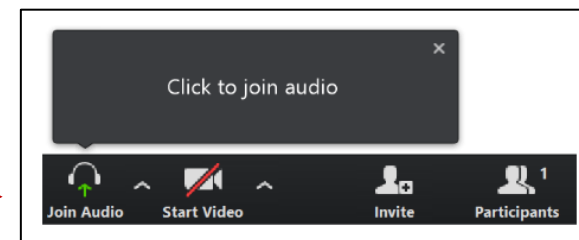
ALL PARTICIPANTS ARE MUTED UPON ENTRY. WE ASK THAT YOU REMAIN MUTED TO LIMIT BACKGROUND NOISE.



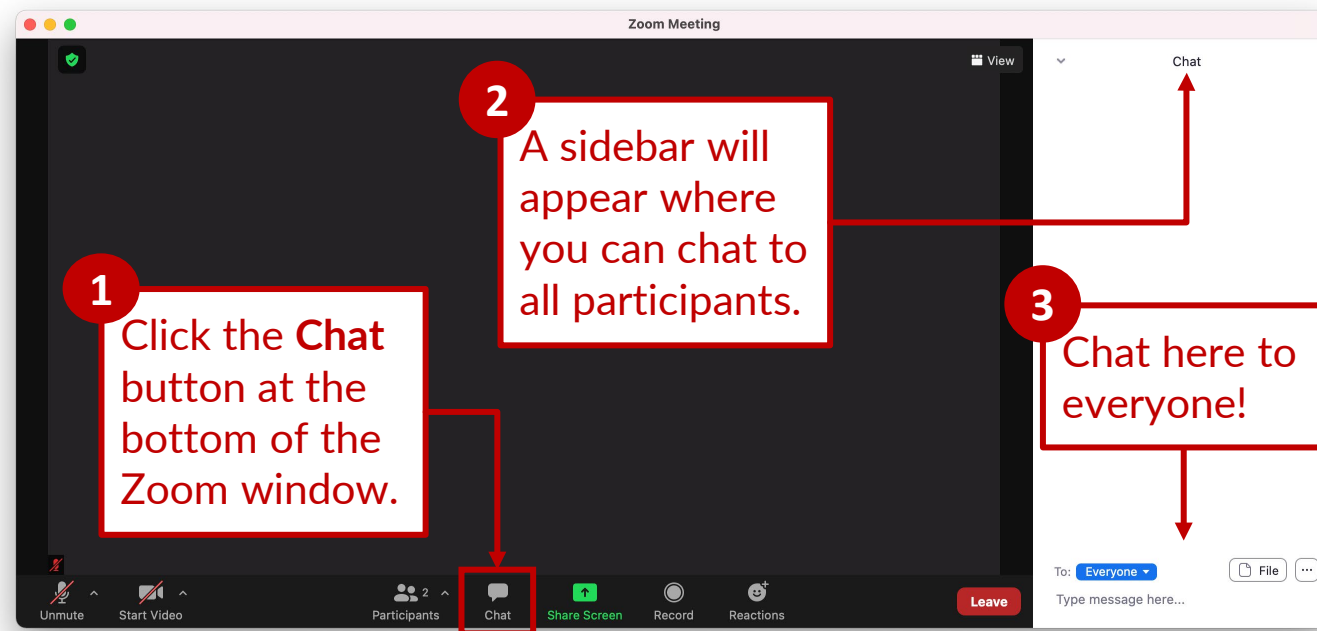
PARTICIPANTS ARE ENCOURAGED TO SHARE COMMENTS AND ASK QUESTIONS USING THE CHAT BOX.

Audio

- AFTER YOU JOIN THE ZOOM SESSION, AN AUDIO CONFERENCE BOX MAY APPEAR
 - IF YOU DO NOT SEE THE BOX, CLICK **'Join Audio'**
- FROM THE AUDIO CONFERENCE BOX, SELECT **'Phone Call'** OR **'Computer Audio'**
 - IF ACCESSING THE SESSION AUDIO VIA PHONE:
 - DIAL ONE OF THE GIVEN NUMBERS NEXT TO **'Dial'**
 - YOU WILL BE PROMPTED TO ENTER THE **Meeting ID**
 - THEN YOU WILL BE PROMPTED TO ENTER THE **Participant ID**



Chat





Welcome

Melodye Watson

DIVISION OF HEALTHY
START & PERINATAL
SERVICES

*INFANT HEALTH EQUITY SUPPLEMENTAL FUNDING WEBINAR
HOSTED BY THE HEALTHY START TA & SUPPORT CENTER AT NICHQ*

NICHQ
National Institute for
Children's Health Quality

HEALTHY
start
TA & SUPPORT CENTER

A warm, orange-toned photograph of a woman with short dark hair, wearing a green and white striped shirt, sitting on a couch. She is smiling and looking down at a young child with curly hair who is holding a large pink piggy bank. Another child is sitting next to them, looking towards the camera. The background shows a wooden nightstand and a lamp.

Introductions

Kenn Harris

HEALTHY START TA &
SUPPORT CENTER

INFANT HEALTH EQUITY SUPPLEMENTAL FUNDING WEBINAR
HOSTED BY THE HEALTHY START TA & SUPPORT CENTER AT NICHQ

NICHQ
National Institute for
Children's Health Quality

HEALTHY
start
TA & SUPPORT CENTER

ROUND ROBIN:

In 60 seconds, please provide an update on the progress you have made since our last meeting in December.

Co-Parenting

Kenn Harris

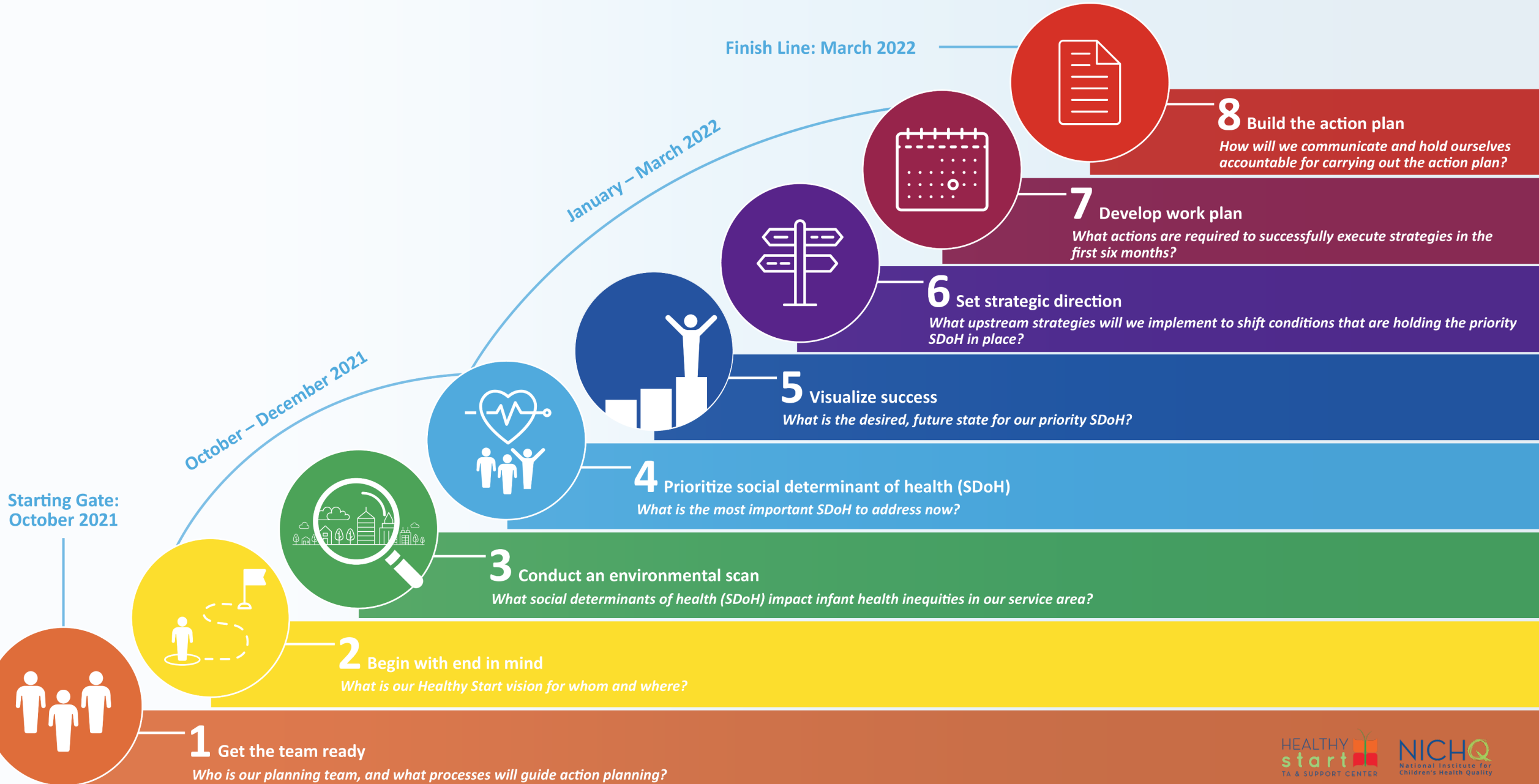
HEALTHY START TA &
SUPPORT CENTER

*INFANT HEALTH EQUITY SUPPLEMENTAL FUNDING WEBINAR
HOSTED BY THE HEALTHY START TA & SUPPORT CENTER AT NICHQ*

NICHQ
National Institute for
Children's Health Quality

**HEALTHY
start**
TA & SUPPORT CENTER

ACTION PLANNING STEPS



Which step(s) are you currently working on?

Breakout Groups

What challenges has your team encountered along these steps and how have you addressed these challenges?

Debrief

What challenges has your team encountered along these steps and how have you addressed these challenges?

Questions?

A woman with dark skin and long braided hair is holding a baby. She is wearing a white top and looking down at the baby with a gentle expression. The background is a soft, light green.

Next Steps

Nikki Maffei

HEALTHY START TA &
SUPPORT CENTER

*INFANT HEALTH EQUITY SUPPLEMENTAL FUNDING WEBINAR
HOSTED BY THE HEALTHY START TA & SUPPORT CENTER AT NICHQ*

NICHQ
National Institute for
Children's Health Quality

HEALTHY
start
TA & SUPPORT CENTER

IHE Convenings in Spring 2022

If we were to have a hybrid meeting in Spring 2022, would you be more likely to join virtually or in-person?

If we were to hold a convening in Washington, DC in February or March, how likely are you to travel to this convening?

Satisfaction Survey

*YOUR FEEDBACK IS EXTREMELY VALUABLE AND WILL HELP
ENSURE OUR OFFERINGS MEET YOUR SUPPORT NEEDS!*

Mid-Point Check-in

- DOCUMENT ANY SHIFTS THAT HAVE BEEN MADE TO YOUR METHODOLOGY, WORKPLAN OR TIMELINE
- PROVIDE AN UPDATE ON YOUR CURRENT PROGRESS
- REQUEST ADDITIONAL RESOURCES OR SUPPORT
- ONLY A FEW QUESTIONS!

Action Plan Draft

- EMAIL YOUR DRAFT ACTION PLAN AS OF 2/15
- DOESN'T NEED TO BE PRETTY OR FINALIZED
- CONTENT FROM THE DRAFT ACTION PLANS WILL BE SHARED BACK TO IHE GRANTEES IN A CROSSWALK IN EARLY MARCH

Next Steps:

- Complete and submit your Mid-Point Survey by EOD Monday, January 31
- Submit your Action Plan Draft by EOD Tuesday, February 15

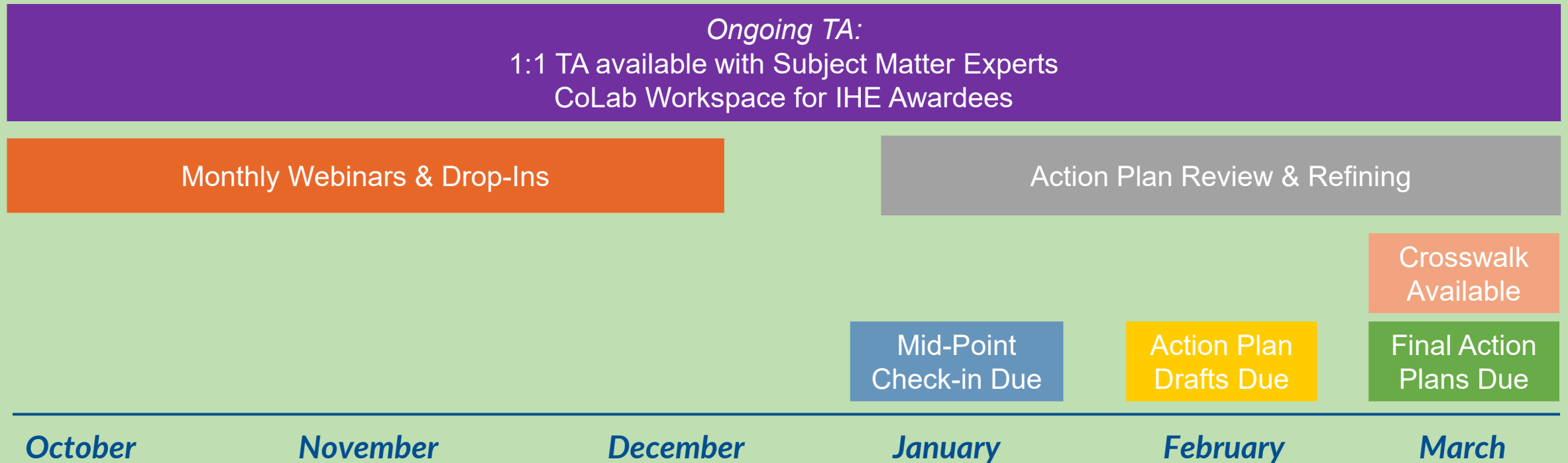
TASC will prepare and share a *crosswalk* of responses from your drafts to share with the group in early March.

INFANT HEALTH EQUITY SUPPLEMENTAL FUNDING WEBINAR
HOSTED BY THE HEALTHY START TA & SUPPORT CENTER AT NICHQ

NICHQ
National Institute for
Children's Health Quality

HEALTHY
start
TA & SUPPORT CENTER

TASC Activities Timeline





Thank you !

*Infant Health Equity Supplemental Funding Webinar
Hosted by the Healthy Start TA & Support Center at NICHQ*

NICHQ
National Institute for
Children's Health Quality

**HEALTHY
start**
TA & SUPPORT CENTER

