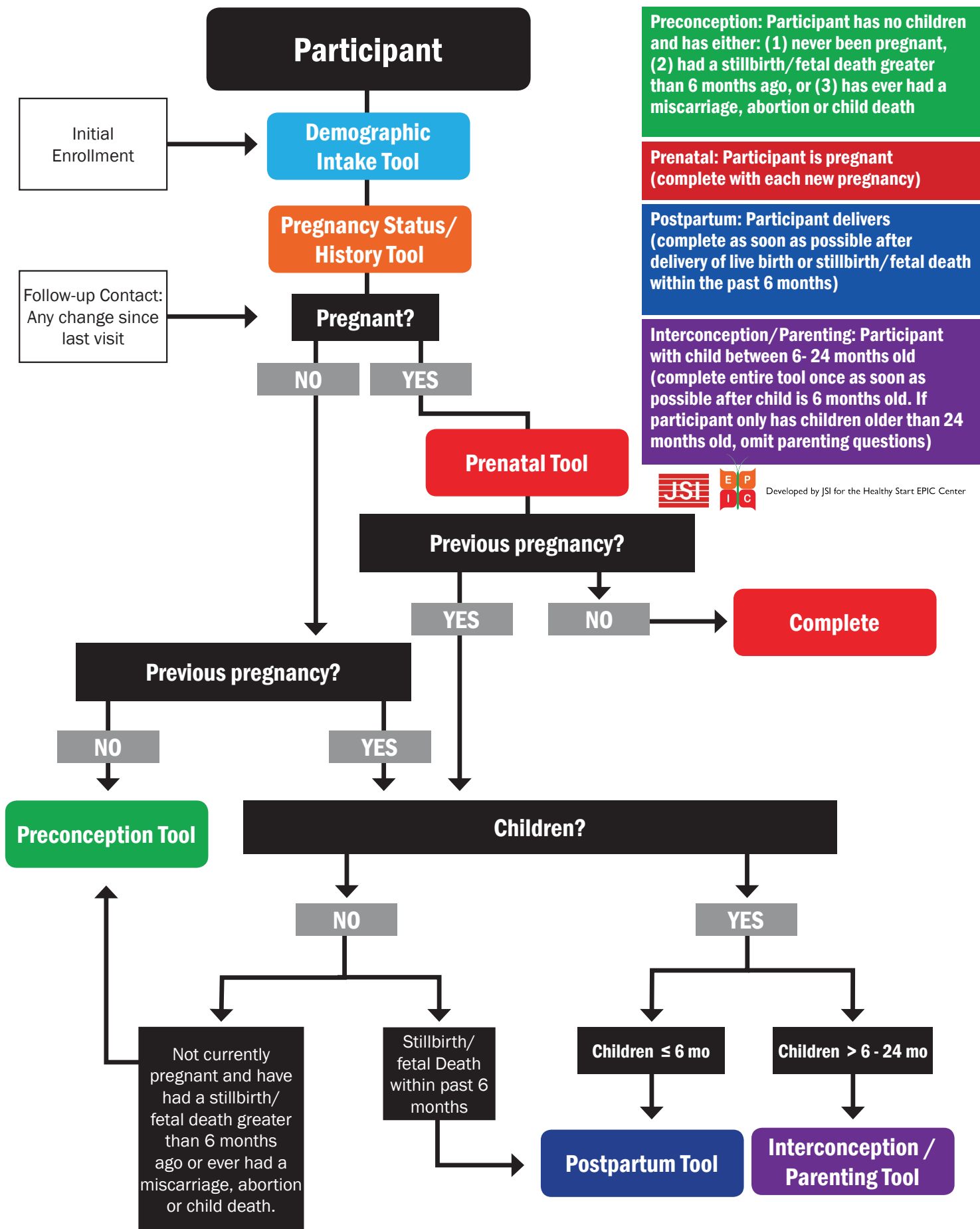


HEALTHY START PARTICIPANT SCREENING PROCESS



Preconception: Participant has no children and has either: (1) never been pregnant, (2) had a stillbirth/fetal death greater than 6 months ago, or (3) has ever had a miscarriage, abortion or child death

Prenatal: Participant is pregnant (complete with each new pregnancy)

Postpartum: Participant delivers (complete as soon as possible after delivery of live birth or stillbirth/fetal death within the past 6 months)

Interconception/Parenting: Participant with child between 6- 24 months old (complete entire tool once as soon as possible after child is 6 months old. If participant only has children older than 24 months old, omit parenting questions)



Developed by JSI for the Healthy Start EPIC Center