

LOCAL HEALTHY START EVALUATION: MEASURING IMPACT

Jeffrey J. Guidry, Ph.D.

Local Evaluator

June, 2015

Workshop Objectives

- TO REACH COMMON GROUND BETWEEN PROGRAM IMPLEMENTATION AND LOCAL EVALUATION
- To describe similarities and differences in Healthy Start Level I, II, and III local evaluations
- To identify key Healthy Start Approaches and Benchmarks/Performance Measures alignment to local evaluation
- To discuss the role of Implementation Fidelity to set the overall identification of key process and outcome data collection and analyses.
- To present lessons learned for staff and community engagement in the local evaluation

Workshop Format

- Healthy Start Evaluation Overview
- Participatory Evaluation Process
- Measuring Impact
- Breakout Session: Group Exercise—5 Healthy Start Approaches
- Lessons Learned/Examples
- Q&A

Healthy Start Evaluation Overview

5 Approaches

- Improving Women's Health
- Promoting Quality Services
- Strengthen Family Resilience
- Achieve Collective Impact
- Increase Accountability, Quality Improvement and Evaluation

Participatory Evaluation Process

- Planning
- Training
- Identification of Key Common Activities
- Stakeholder Evaluation Committee (CAN)
- Communication: Review and Comment
- Dissemination
- Feedback

Measuring Impact

- Implementation Fidelity
 - Needs Assessment
 - Benchmark/Performance Measures
 - 50/50 Requirement
 - Data Sources (Primary and Secondary)
 - Protocol/Flowchart
 - Scope of Services/Key Staff Responsible
 - Implementation of Findings
- Process Evaluation
- Outcome Evaluation

Breakout Session

- Identify Recorder
- Identify Key Indicators By Groups
 - Improve Women's Health
 - Promote Quality
 - Strengthen Family Resilience
 - Achieve Collective Impact
 - Increase Accountability, Quality Improvement and Evaluation

Lessons Learned over 17 years of Local Evaluator's Experiences

- Healthy Start Program Changes/Enhancements
- Evaluation Training
- Collaboration and Engagement of Stakeholders
- Geographic Information Systems (GIS)
- Dissemination and Feedback

Healthy Start Program Changes/Enhancements

- Healthy Start Overall Changes
- Movement to HS 3.0
- Evidenced-based Interventions
- Healthy Start Approaches
- Quality Improvement and Monitoring

Evaluation Training

- Internal Staff Assessment
- Training by Core Service and System Component Area
- Staff Training
- Participatory Process and Buy-In

Collaboration and Engagement of Stakeholders

- Introduction to Healthy Start 3.0
- Preparation and Notification
- Evaluation Training/Priorities
- Stakeholder Engagement
- Presentation and Dissemination

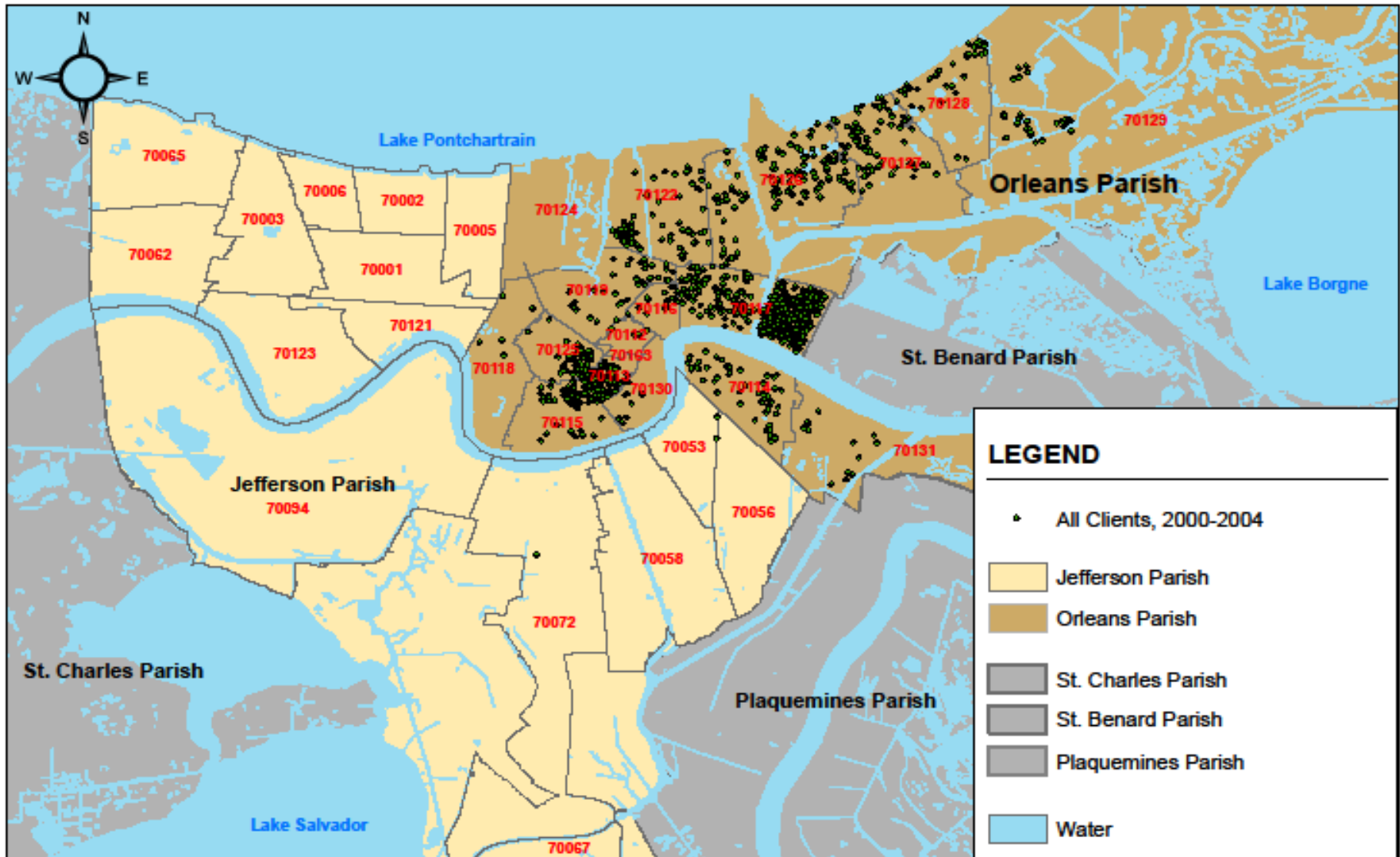
Geographic Information Systems (GIS)

- Introduction of GIS Process
- Healthy Start Application
- Training and Development
- National Disaster: Hurricane Katrina
- Target Population Mobility

Orleans Parish & Jefferson Parish Pre-Hurricane Katrina, 2000-2004

Healthy Start New Orleans (HSNO)

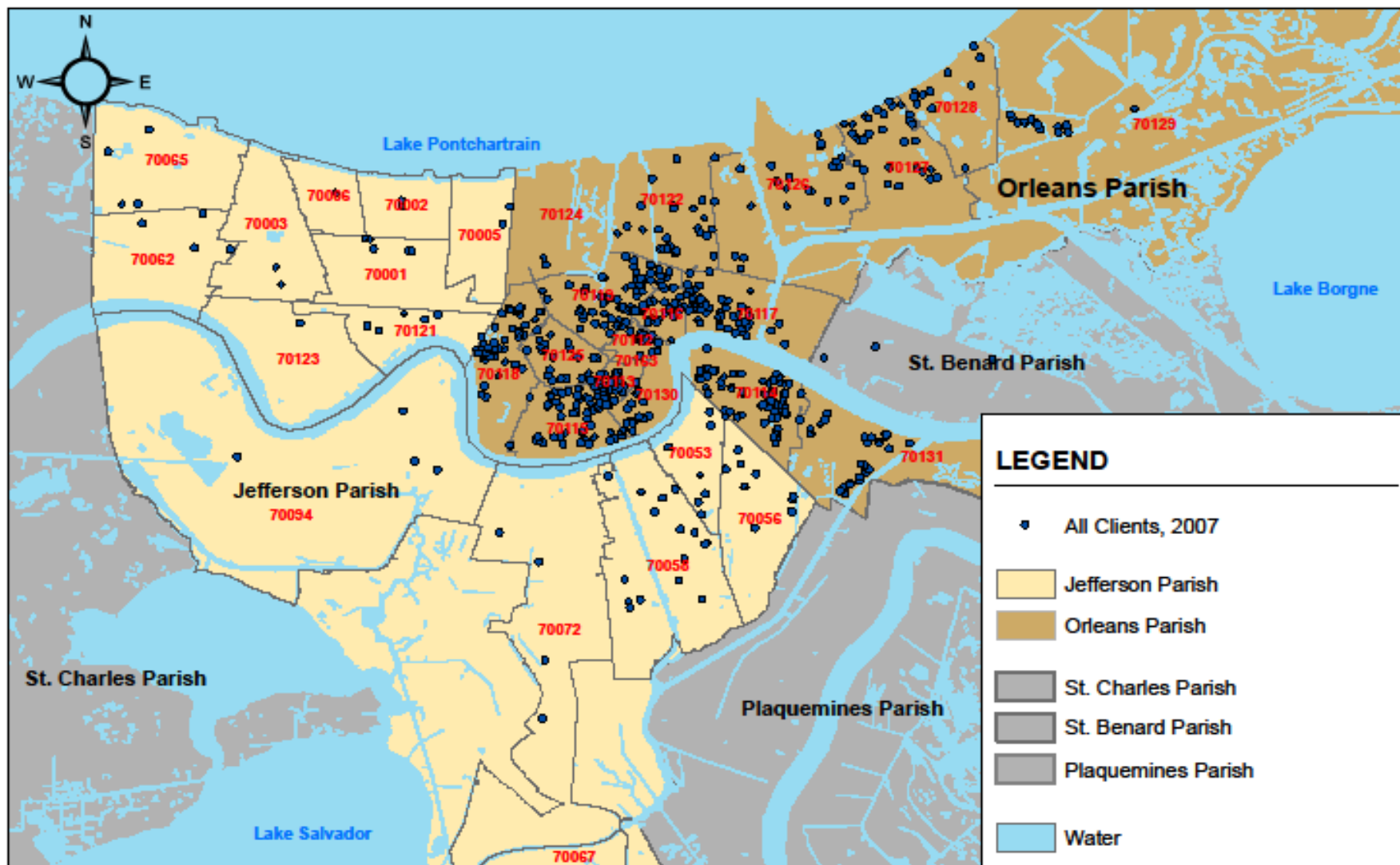
All Clients (Pre-Hurricane Katrina): 2000-2004



Orleans Parish & Jefferson Parish Post-Hurricane Katrina, 2007

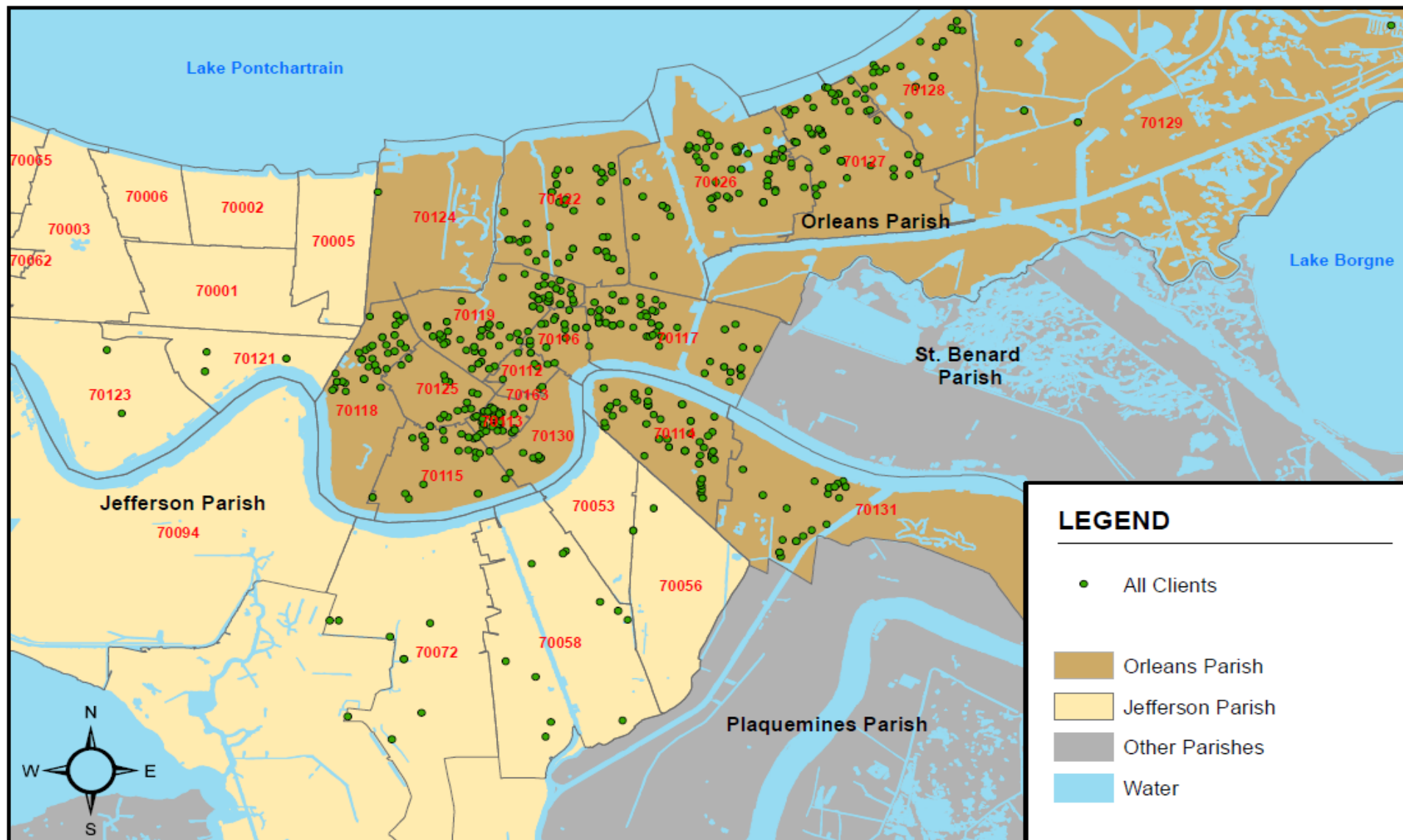
Healthy Start New Orleans (HSNO)

Prenatal & Interconceptional Clients: 2007



Healthy Start New Orleans (HSNO), 2013

Prenatal and Interconceptional Clients



Dissemination and Feedback Information Packaging

- HS Service/System Alignment
- Staff Engagement
- Community Engagement
- Continuous Quality Improvement
- Data Sharing and MCH Program Development

Q&A
